



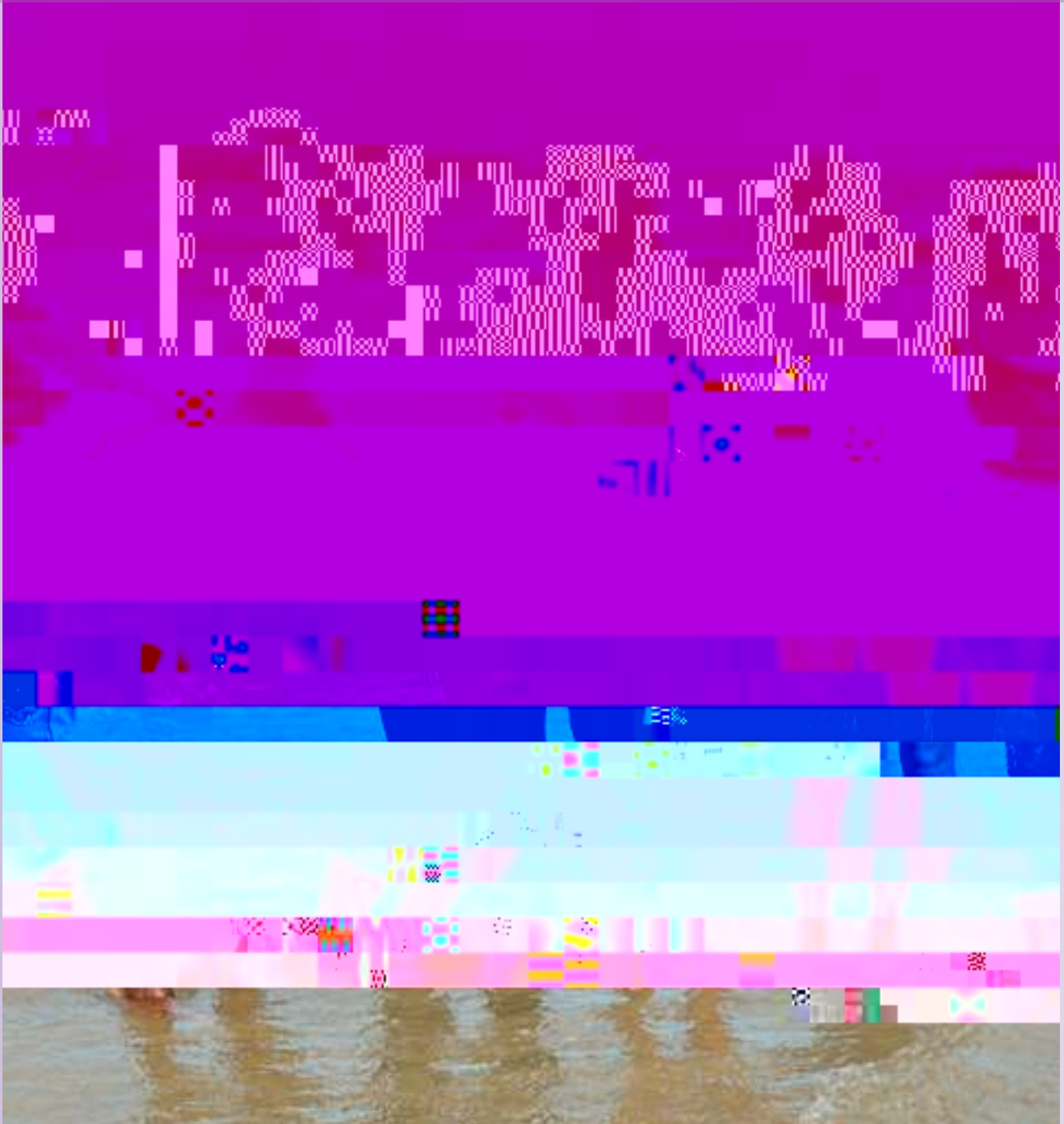






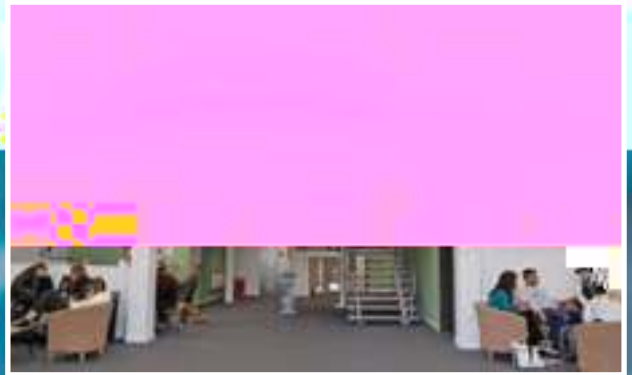
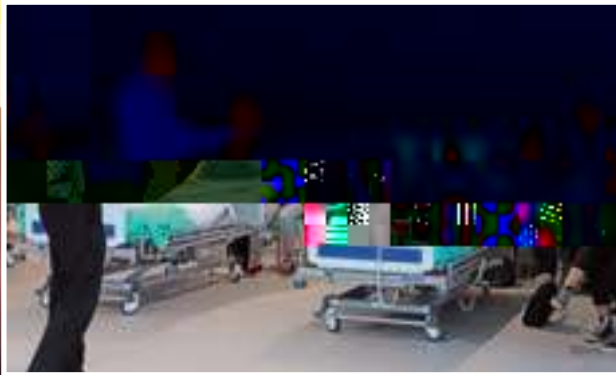
## 2. Student satisfaction in the *National Student Survey* 2022.

The University can trace its origins back to 1839 when it was founded as a teacher training college by William Otter, the Bishop of Chichester.

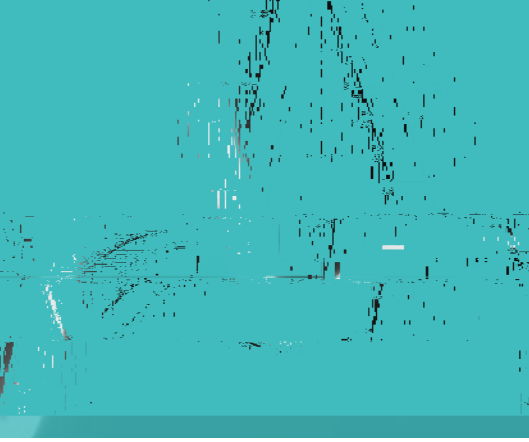




# Our impact in **WEST SUSSEX**



Centre for School of Nursing and Allied Health



## new sChool of nursing

## empowerIng homeless people through eduCation

the university is transforming the lives of homeless people by empowering them with the confidence and skills to apply for degree courses. a bridging course has been created in collaboration with west sussex's homeless charities to develop academic skills and ensure students are ready for the first year of study. the 12-week course is a non-traditional route into higher education and ultimately prepares students to study a degree at the university of Chichester.

past students have continued to study a range of subjects at university level including fine art, outdoor and adventure education, mechanical engineering, creative writing, and psychology. among them is Lucy d, who started sleeping rough at just 16 years of age before falling into addiction. now, at the age of 30, she is studying a fine art degree. she said: **"It has given us the confidence to start a degree. We cover subart degree**



“”

**SOME OF THE MOST INTELLIGENT PEOPLE  
IN THE UK ARE LIVING IN POVERTY, BOTH  
ECONOMICALLY AND ASPIRATIONALLY.**

Becky edwards, senior I ecturer

... **TO UNIVERSITY**



emma Wiggs, mBe.

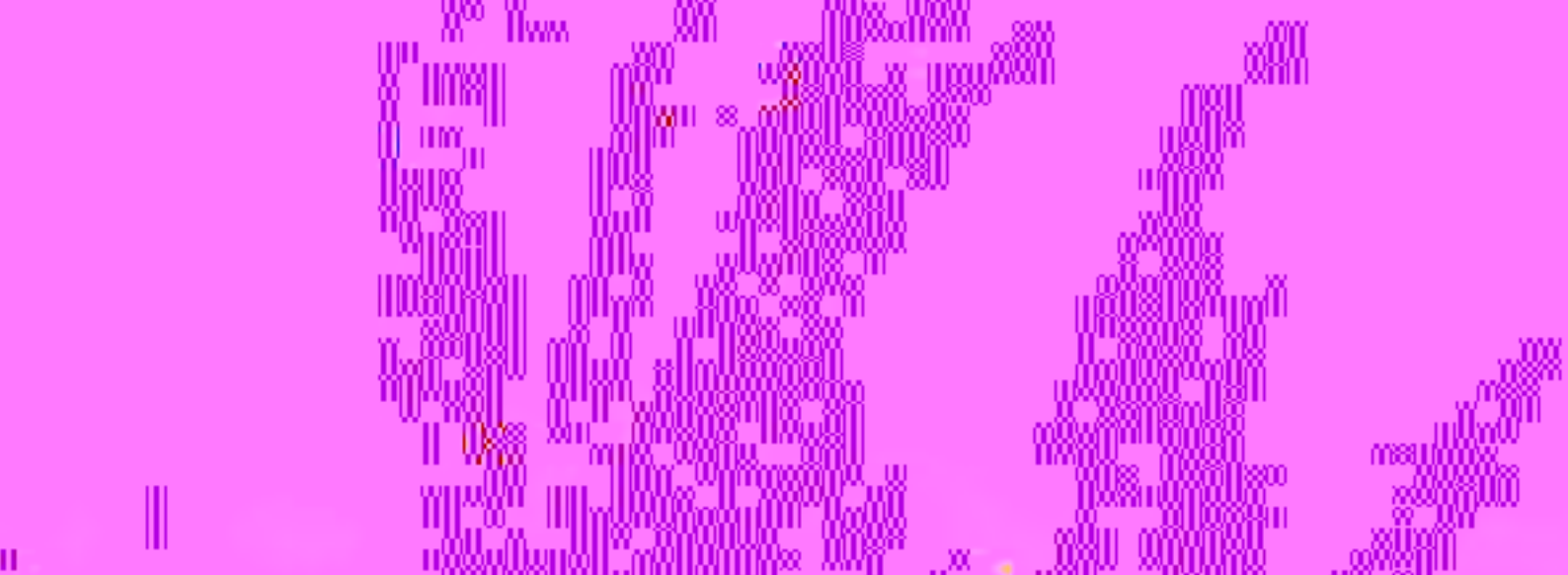


““”

THE UNIVERSITY OF CHICHESTER WAS INCREDIBLE FOR ME

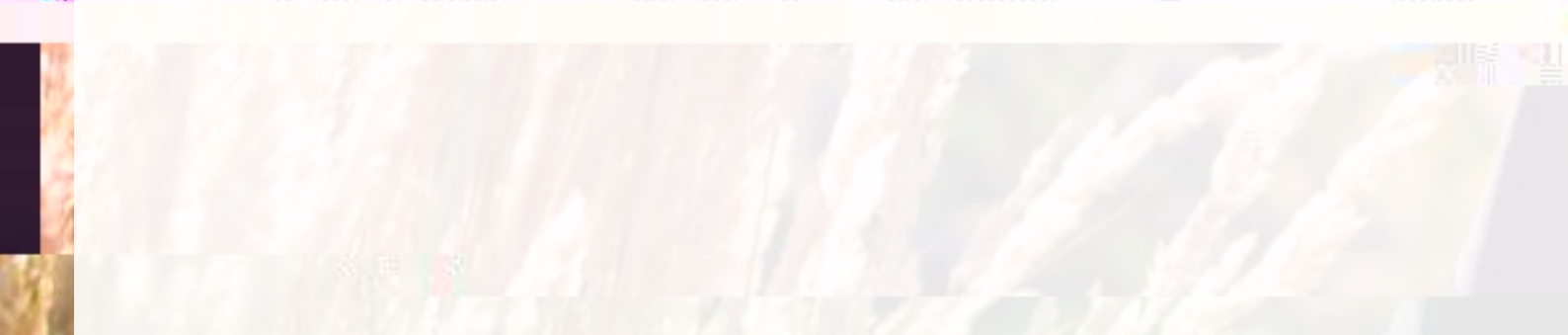
emma Wiggs, MBe





novelist Beth Roberts published the hit novel *My Policeman* in 2012 and has gone on to further award-winning success with subsequent books. she revealed she agreed the deal to the film rights to the film over eight years ago, a relatively quick turnaround for a literary adaptation.

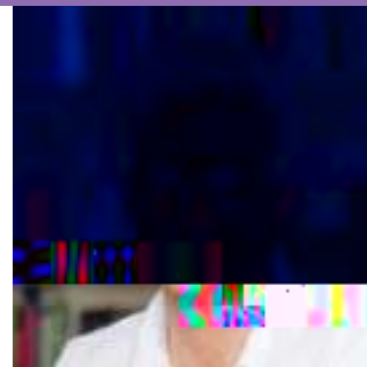
the novel follows the story of policeman tommy and his wife marion in 1950s Brighton, as he attempts to hide his relationship with museum curator patrick. grammy award-winning







The University study analysed the world's 60 biggest sports organisations.



Dr Jordan Matthews, Lecturer



**GENDER EQUALITY IN GOVERNANCE WILL ONLY BE EFFECTIVE IF ORGANISATIONS DEMONSTRATE A GENUINE COMMITMENT AND IMPLEMENT AMBITIOUS ACTIONS**

Dr Jordan Matthews, Lecturer

# We are

# INTERNATIONAL

Our research breaks new ground in research that can improve lives worldwide. Here we outline our academics' renowned work which is helping to brighten the future.



Norwegian University of Science and Technology

## women still overlooked for top jobs in International sport

Research from the University of Chichester finds that women make up just 22 per cent of executive boards and only 7 per cent of presidential or chair roles across the international sports sector. A new research report has found 'significant' gender imbalance among top decision-making roles across international sport organisations. Undertaken by the University of Chichester in collaboration with NTNU in Norway and commissioned by UK Sport, researchers analysed women's representation in leadership of 60 of the biggest sport bodies worldwide.

The study revealed that women's underrepresentation was most prolific in the highest governance roles, such as chair or president. It also highlighted a substantial gender inequality among the senior positions of global Olympic and Paralympic organisations. The research team checked if the organisations had gender and governance targets, including quotas and support of women's leadership development programmes. Only six of those 16 organisations had agreed a timescale for change.

Chichester lecturer and report co-author Dr Jordan Matthews suggested the findings highlighted the need for wide-scale change within global sports organisations. "Athletes at the Tokyo

Olympics are gradually shifting towards being gender balanced," said Dr Matthews. "But, off the track, women's representation as leaders in international sport organisations remains poor despite decades-worth of efforts to address the imbalance. Gender equality in governance will only be effective if organisations demonstrate a genuine commitment and implement ambitious actions that are embedded across their culture. This will make sure that women are not just represented but have power to influence the governance of these international organisations."

Read more at [chi.ac.uk/research/institute-sport-research](http://chi.ac.uk/research/institute-sport-research).



## understanding the psyChol ogiCal pressures of the world's top videogame CompetItors

the university is leading new research into the psychological and mental health effects of elite competition on esports athletes. from its former niche existence, esports has evolved into a mass-market international phenomenon and is watched by hundreds of millions online and in sold-out stadiums. this rapid rise in popularity has seen an influx of lucrative sponsorship

deals for major teams and players, with the esports market predicated to be worth around \$2billion next year.

however, the level of support for esports players has yet to catch up. while sports psychology has been a fundamental part of







# Our FINANCIAL POSITION

The university's financial position continued to strengthen in the year ended 31st July 2021 compared with the year ended 31st July 2020.

## Financial performance

A full financial statement and report is available on the university's website at [chi.ac.uk/about-us/policies-and-statements](http://chi.ac.uk/about-us/policies-and-statements). The university's consolidated results for the years ended 31st July 2021 and 31st July 2020 are summarised in this table:

	31st July 2021	31st July 2020
	£000	£000
total income	59,828	54,878
total expenditure		

1 2





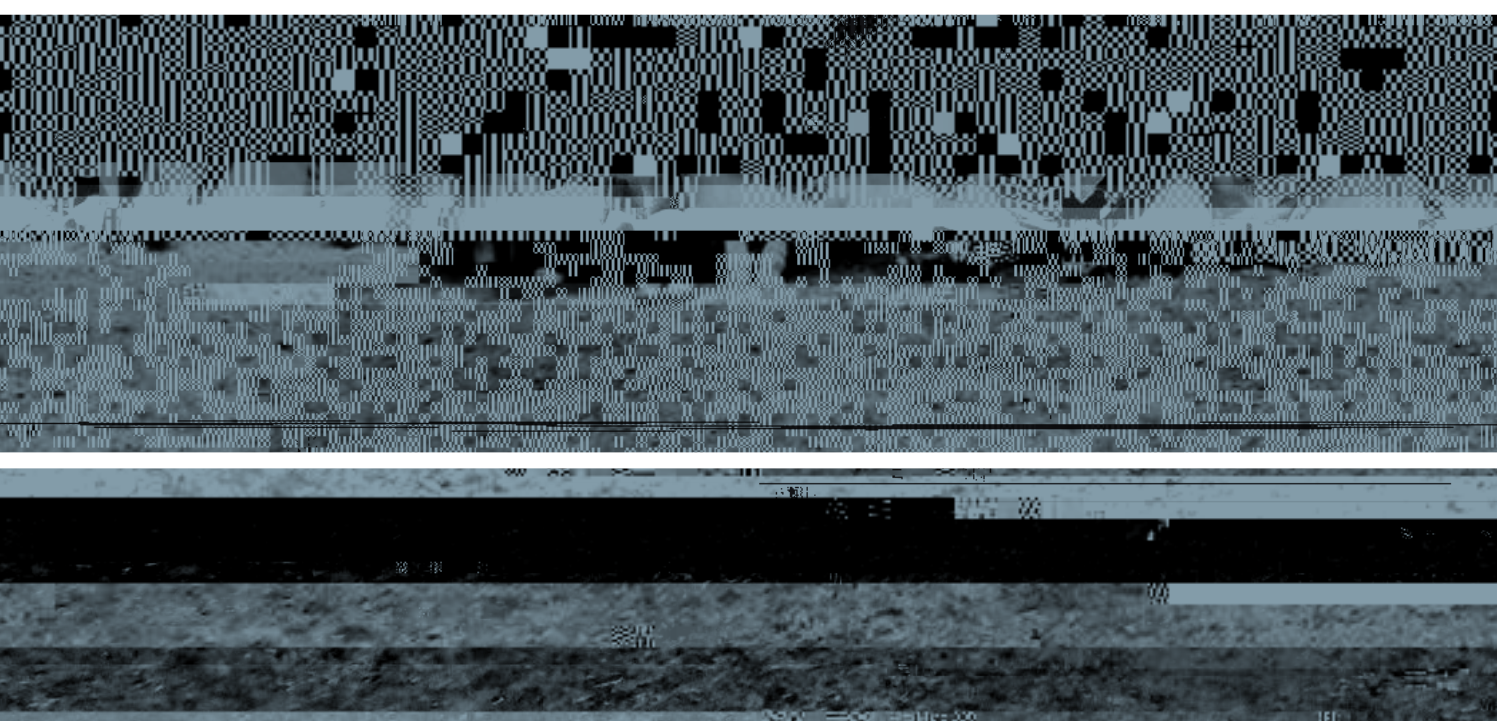
## Consolidated Balance sheet

the university's consolidated net assets have increased by £3,830k to £46.9m. fixed assets have decreased by £3,334k, reflecting the university's policy of annual depreciation charge of assets over their useful life of £4.4m and an asset impairment of £429k relating to the sports dome floor, for which we received a claim settlement of £935k.

fixed assets additions of £2.1m include the first phase of investment in a building refurbishment for allied health. disposals of £1.1m include the final properties in the asset disposal programme.

the university has creditors with amounts falling due after more than one year of £73.4m (2020: liabilities of £76.1m). the reduction relates to the scheduled loan repayments and finance lease obligations and release of deferred capital grants.

pension provisions have reduced by £102k to £16.5m, of which £15.5m relates to the west sussex County Council lgps valuation as at 31<sup>st</sup> july 2021. the last triennial valuation of this fund







On 29<sup>th</sup> January 1839 Bishop William Otter, Bishop of Chichester, appeals to the Clergy and laity of the Diocese of Chichester for the formation of a Diocesan Board of Education. Bishop Otter states that both a Theological and a Teacher Training College for men are to be established.



